



BC FIRST NATIONS
HOUSING &
INFRASTRUCTURE
COUNCIL

GOOD GOVERNANCE

Developing Models for Delivery and Implementation





What is a Delivery Model?

Based on previous engagement, and design exercises, DRAFT models were developed

- They represent three different ways of looking at the Authority
- They are **NOT** isolated models, and these are not being presented as a **CHOICE**
- The final model will likely be a **BLEND** of several different components



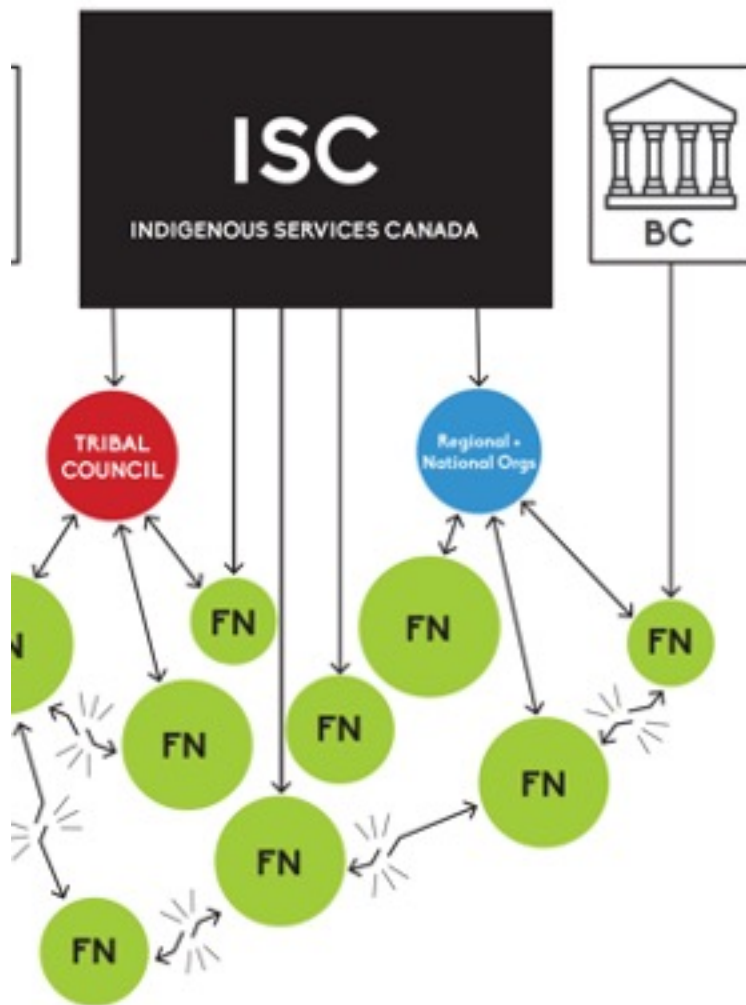
Our Delivery Model Design is:

Focusing on key design elements of the system including:

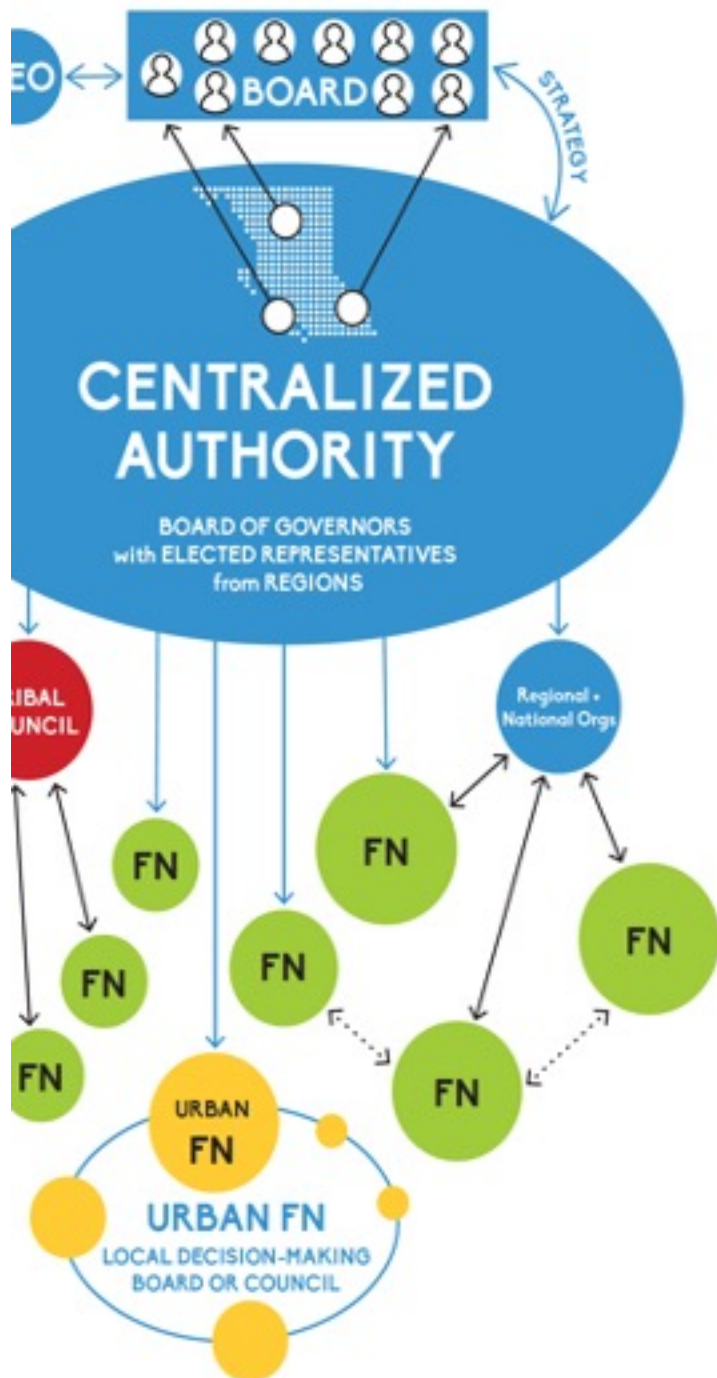
- Culture and values
- Governance
- Priorities, policy & procedure
- Location & structure
- Suite of services
- Fiscal relationships
- Harmonization/integration
- Capacity development and staffing

Program and individual service level delivery will be determined when the authority is in place – based on community input

Existing System

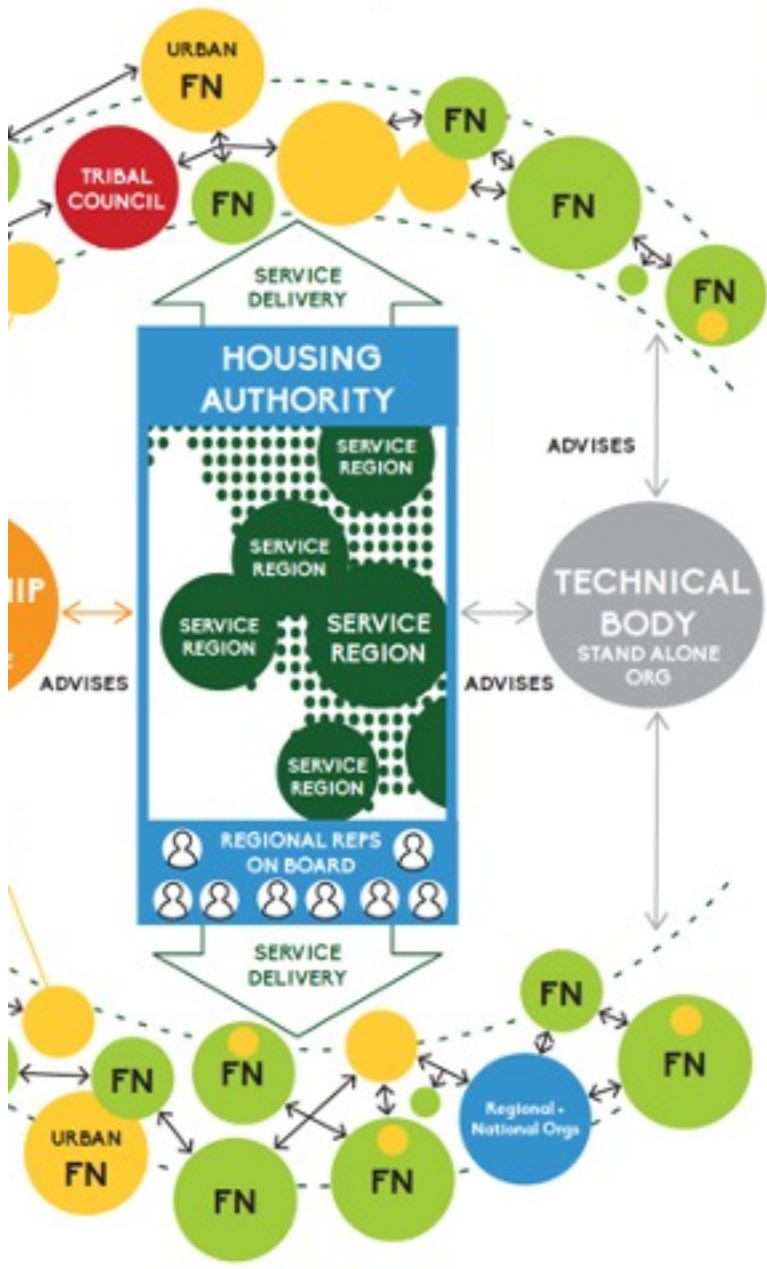


- Status Quo, Centralized Del
- Top-Down Approach
- Accountability to Governme
- No accountability to First Nations
- Competitive Funding Model pitting communities against another
- Outputs-Based
- Lack of focus on Northern, Remote, Urban FNs
- No Feedback
- Limited Growth & Capacity Development



EXAMPLE 1 – Centralized Authority Centralized Service Delivery

- Centrally-driven
- Top-Down Approach
- Limited accountability to First Nat
- No major changes to existing prog
- Competitive Funding Models may be primary mechanism
- Urban issues dealt directly by Cent Office
- Lack of focus on Northern & Rem FNs
- Increased Feedback through BOG, Regional Leadership



EXAMPLE 2 – Centralized Authority Decentralized Service Delivery

- Centrally-based power
- Community-Driven
- Increased accountability to FNs
- Regional service offices located around the province working directly with FNs
- Political Leadership Council advising Authority
- Technical Advisory council provides education, professional dev., etc.
- Competitive Funding Models pitting communities against one-another
- Urban issues dealt directly by community integrated approach
- Mobile Northern & Remote Service Delivery office
- Opportunity for program and service innovation



EXAMPLE 3 – Centralized Authority Decentralized Service Delivery

- Dispersed region-based power
- Region-Driven
- Increased accountability to FNs
- Regional service offices function as authorities, work directly with FNs
- Political Leadership Council advisory Authority
- No central office
- Urban issues dealt directly by region through stand-alone regional urban housing hub
- Northern & Remote Service Delivery office
- Opportunity for program and service innovation